



SALA Basix 2 point, fall arrest harness

Description

This CE marked harness which conforms to EN361, is equipped with a front and rear fall arrest attachment point for fall protection purposes.

The front fall arrest point is self positioning, whilst the user is attached via the front fall arrest point as they twist and move during work the fall arrest point slides over to the left, or the right, thus transmitting less force to the users body. In the event of a fall the front fall arrest point readjusts itself to a central position.

The harness has adjustments on the shoulders and legs to provide a perfect fit to give maximum comfort and safety during work.

Main features

- Simple and quick to fit and adjust
- Self positioning front fall arrest point
- Adjustable rear fall arrest attachment point
- Adjustment on shoulders, legs
- Sub pelvic strap
- All webbing ends sewn.

Applications

Suitable for use in the following fall arrest situations.

- Mast tower work
- Pitched roof
- Flat roof
- Scaffolding/steel work
- Structural steel
- Ladder climbing
- Edge protection


CE

Associated Products

With the front or rear fall arrest points the following product are recommended

- Sala retractable fall arrest blocks conforming to EN360
- Sala fall arrest energy absorbing lanyards conforming to EN355

The front fall arrest point is ideally situated to be used with

- Sala vertical fall arrest systems conforming to EN353-1 & EN353-2

KB161

(N-61)



SALA Basix 2 point, fall arrest harness

Technical specification

- Webbing - 45mm width, 100% Polyester, Breaking strength >3400 daN
- Thread - High strength, 100% Polyester
- Fall arrest D-rings - Breaking strength >2200 daN, Heat treated alloy steel, White zinc plating finish.
- Buckles (leg, shoulders) - Breaking strength >1500 daN, Heat treated alloy steel, White zinc plating finish.
- Individual serially numbered
- Net Weight – 1210g
- Conforms to standard – EN361
- System attachment point breaking Strength >15KN

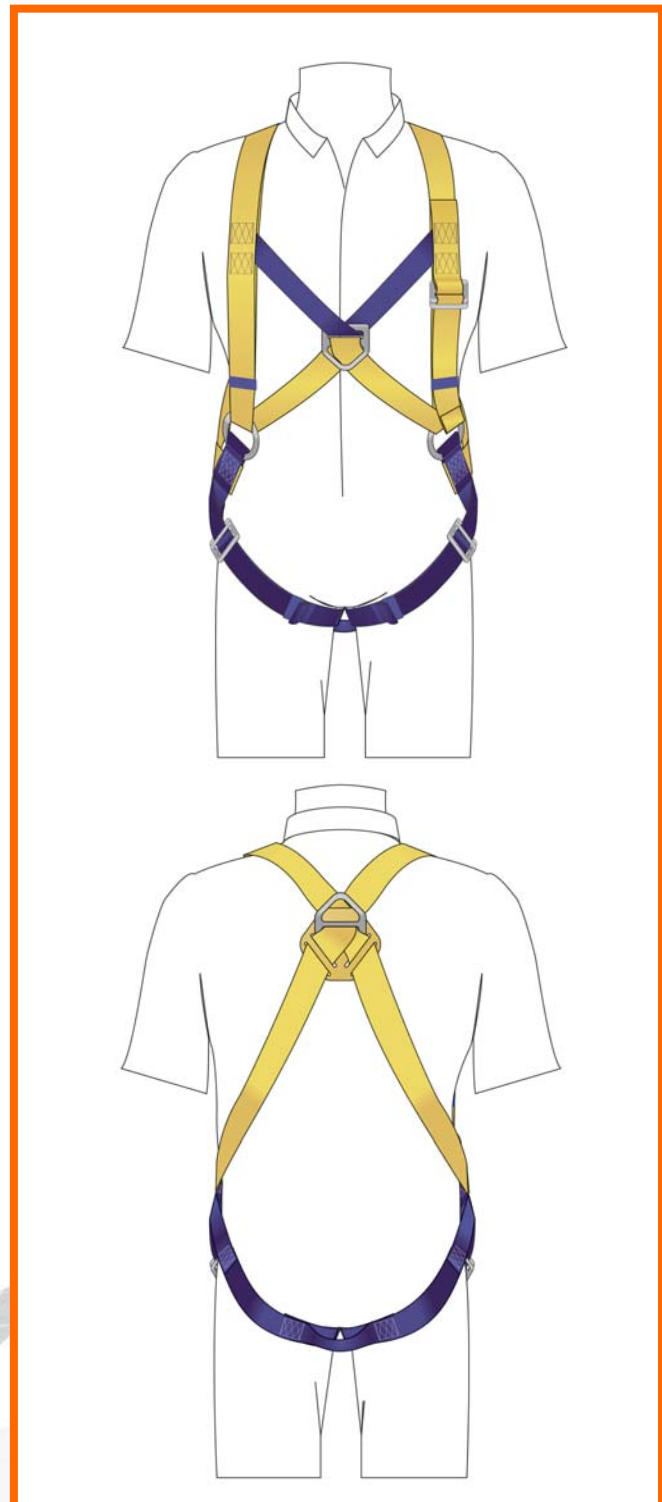
Options

KB1300S

Professional multi purpose 2 point fall arrest harness, with adjustment on shoulders, and legs. Incorporating the 'Surefit' limited stretch system insuring flexibility and a perfect fit.

KB1400S

The same harness base as the KB1300S above, with the addition of a large generously padded work positioning belt.



CE

Capital Safety Group reserves the right to modify the specification of this product without prior notice. Descriptions, colours, pictures and diagrams herein appear for guidance only.